

Getting Started Guide



Grid Player

Overview

Grid Player is a communication app for the iPad. It comes with four grid sets: Symbol Talker A, Symbol Talker B, Talking Photos and Text Talker Phrasebook.

Your grid sets from Grid 3 can be download to Grid Player to supplement the grids available.

Step by Step

1. Open Grid Player on your iPad, clicking the Grid Player icon.

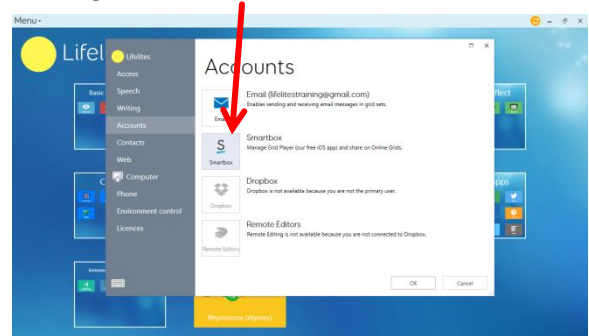


2. Select an existing grid to use. There are four available

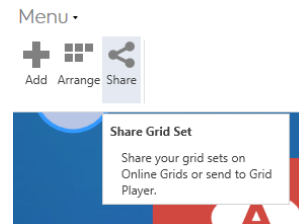


Sharing Grids from Grid 3 to Grid Player

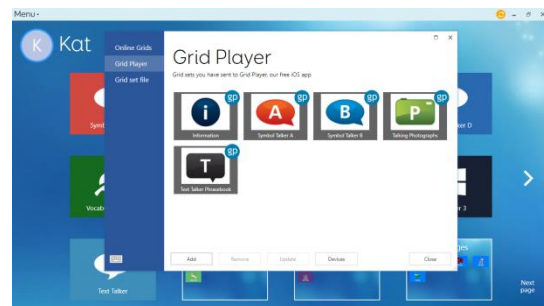
1. To share grids from Grid 3 to your Grid Player sign into your smartbox account (Menu, Settings, Accounts, Smartbox, Existing account)



2. Then go to **Menu and Share**



3. When you select **Grid Player** you will find the grids already on your grid player application on your iPad.



4. Click **Add**, pick the grid set you want to add to your grid player, clicking 'Next and it will upload.

5. Go back to Grid Player on your iPad and click the refresh button. Your additional grid set will then download.

