

# Getting Started Guide



## myGaze 2 – using Grid 3

### Overview

myGaze® Assistive 2, created by Visual Interaction, is gaze control of computer programs made easy and affordable.

- Easy Start
- No-fail calibration
- Works like a mouse with most software
- Suitable for early as well as power users

### Step by Step

To connect it to PC

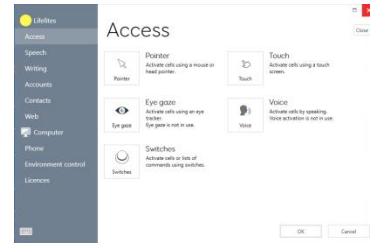
1. The Eyegaze unit plugs into the PC by USB cable and sits on the front of the screen using a magnetic connector.

To open eyegaze software

1. The eyegaze software should automatically start and be in calibration screen, click finish. A rectangle at the top of the desktop screen indicates the software is running and gives a colour indication as to correct positioning. If software is not running click the icon "myGaze Eyemouse Play"



2. Open Grid 3 and Settings. Navigate to Access and select Eye gaze.



Select myGaze from the drop down list if required

3. Choose to track one or both eyes. Click 'Calibration'.
4. Before calibration ensure that the user is in the correct position. The face indicates good and bad positioning; a smiley white face for good positioning, a red sad face for bad positioning.



5. The calibration process involves gazing at a series of targets.
  - a. The color and size of the target can be customized.
  - b. Number of targets – choose 2, 5 or 9. More targets will result in greater accuracy.
  - c. Choose the speed of calibration.

Click Calibrate to begin.

6. When the results are displayed, you can click on one of the calibration points to improve it or 'Improve Calibration' to improve all points. The colour and number in the points is an indication of if a calibration needs improvement. If the calibration is OK then click close.

### Where to find more information

Grid 3 manual:

<https://thinksmartbox.com/smart-support/learning-resources/>