

Getting Started Guide



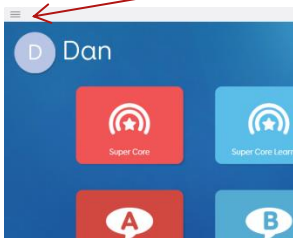
Calibrating Eyegaze with Grid 3

Overview

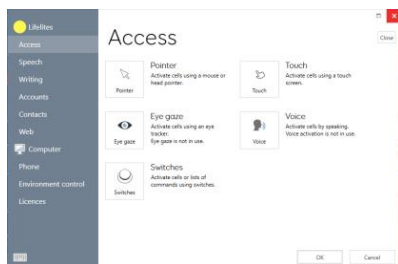
Grid 3 is a software package that empowers people with disabilities to communicate, control their environment and access their computer.

Step by Step

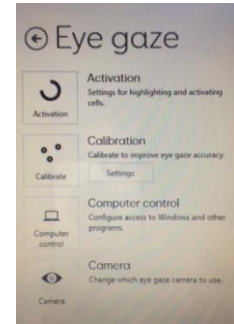
1. Open Grid 3 and select your user.
2. Find the **Settings** menu by clicking on the 3 horizontal lines in the top left corner.



3. Navigate to **Access** and select **Eye gaze**.



4. Click **Camera** and your eyegaze should be selected. Decide here if you would like to track one or both eyes. Go back to previous page.



5. Before calibration, ensure that the user is in the correct position. The face indicates good and bad positioning; a smiley white face for good positioning, a red sad face for bad positioning.
6. Set the calibration setting by clicking settings under the calibration menu.

The calibration process involves gazing at a series of targets.

- a. The color and size of the target can be customized.
- b. Choose the number of targets – 2, 5, 9, 13. More targets will result in greater accuracy.
- c. Choose the speed of calibration.

Once appropriate settings are selected, click the arrow back to the previous page. Then click **'Calibrate'**

7. When the results are displayed, you can click on one of the calibration points to improve it or **'Improve Calibration'** to improve all points. The colour and number shown in the points out of 100 is an indication of whether a calibration needs improvement. If the calibration is OK then click close.