

# Getting Started Guide



## Google Home

### Overview

Google Home is a brand of smart speakers developed by Google.

Google Home speakers enable users to speak voice commands to interact with services through Google's intelligent personal assistant called Google Assistant.

### Step by Step

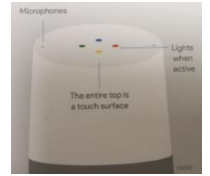
- Your device has been set up already for your hospice, including your location.
- Plug in the location of your choosing.

### Voice Commands

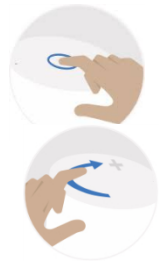
- To speak voice commands just start every time with **'OK Google'** or **'Hey Google'**
- You can change your Google home's voice by going into the Google home app

### Controlling music,alarms etc

- The entire top of your google home is a touch surface:



- Play / Pause / Stop alarm or timer - Touch the device like this
- Turn up the volume - Swipe clockwise on the top of the device.



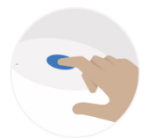
Note: This only adjusts the volume of media. You can adjust alarms and timers volume anytime in the the Google Home app.)

- Turn down the volume - Swipe counterclockwise on the top of the device

Note: At volume level 0, all media will be muted but your Google Assistant will still speak at a minimum level. It doesn't adjust the volume of alarms and timers.

### Other Controls

- Start your request - Press and hold down on the top of the device
- Mic on/off - Press the microphone mute button on the back of the device



Note: Muting the microphone prevents Google Home from listening or responding. To interact with Google Home, the microphone must be on.

- Turn off power - Unplug power cable from Google Home.