



These “Bite-sized” Training Program guides are designed to help Lifelites Volunteers and champions to train and support hospice staff on the use of the magical Lifelites equipment in small bite-sized chunks.

Introduction to Beamz



1. Introduction – checking previous knowledge

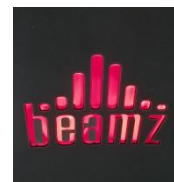
Begin the session by checking if your trainees have used a Beamz before.

2. Explain the benefits

- The Beamz is an interactive music system that uses lasers to trigger musical instruments, sound effects, songs and more. These can be triggered by breaking the beam with your hand, arm, leg, head, pen, the possibilities are endless.
- The Beamz can be used directly from the software using eye gaze technology for those less mobile, or using laptops, touchscreens, iPads, smart phones and switches.
- The Beamz system enables users to engage with music, to motivate and stimulate interaction and teach cause and effect in a fun way.

3. Basic operation – using Beamz device

- To connect the Beamz connect cable from the back of the device to the USB port in the PC or (if using an IPAD/SmartPhone) to a power socket using a usb port plug. When connected and the PC/power is on then the Beamz symbol on the device will turn red.



Ensure that the small switch on the back of the device is towards HID



- Open the Beamz Software by clicking on icon on PC or open application on smart phone/IPAD. Once open the Beamz lasers will turn on.



- The Beamz device has buttons that correspond to the visual layout on the software



- To load a song – Click ‘Playlists’ icon on PC and select a tune from the menu via master menu or genre views. There are also options here to Manage your playlists, create your own or get more songs. When you have created and saved a playlist you will see that it becomes a choice within this list
- To start/stop the backing track – Click ‘Rhythm’ icon on PC or the Rhythm button on the Beamz device.
- To start/stop the vocals of the track – Click ‘vocals’ icon on PC
- The instruments programmed to the 4 laser beams are illustrated in the software. To activate the instrument break the beam or click on the beam on the PC illustration. Multiple instruments can be selected simultaneously using different formats (switches/touch screen/eye gaze).



- There are 3 different pages of instruments illustrated by the number the middle bar of the Beamz software. Click ‘Swap’ icon to alternate between the pages or click the swap button on the actual device. You can have all instrument pages open at once with the small ‘+’ icons at the corners of the screen, this allows multiple instruments on different pages to be played simultaneously



- There are basic volume controls in the software and also on the device (+/- buttons) and controls to go to the next or previous song on the playlist

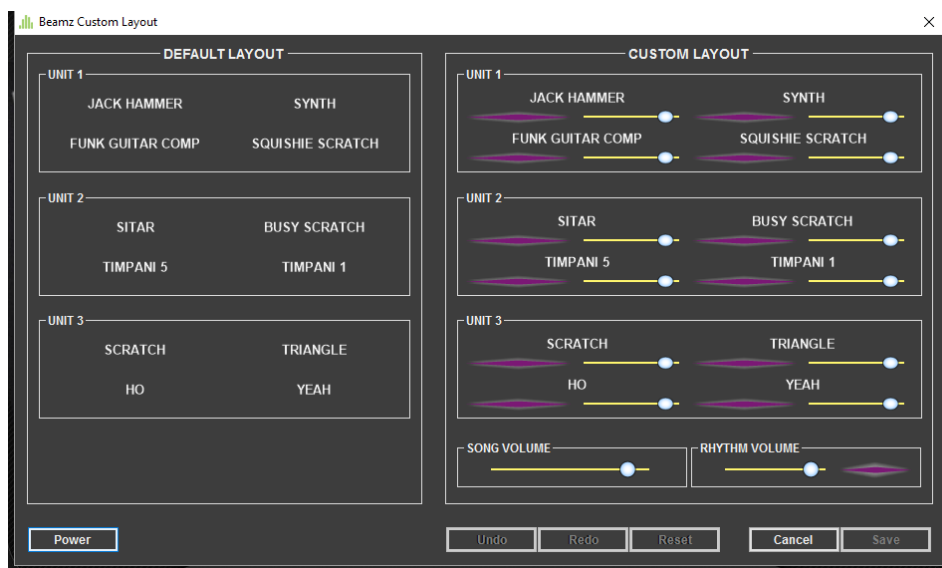
4. Play some music

Choose songs from the playlist using the software to show your trainee. Show that the beam needs to be broken in order to activate the instrument and that they can also be activated from the software. Introduce the rhythm button to start and stop the background music, vocal button to start and stop the vocals and the swap button to change between the pages of instruments.

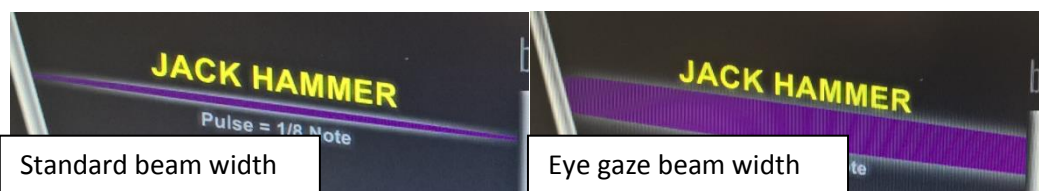
Try using different formats with the Beamz device to show the versatility of group music creativity e.g. using the Beamz device, touchscreen software and perhaps switches.

Show a song that opens a video to increase interaction. E.g. Giggle Bellies

5. **Customising the Beamz** – this is done through the Customise and settings icons. Within the customise area you can change which instrument is on which page of instruments by clicking and dragging to whichever page of instruments you require, their relative volumes and power, the volume of the rhythm and song can also be altered.

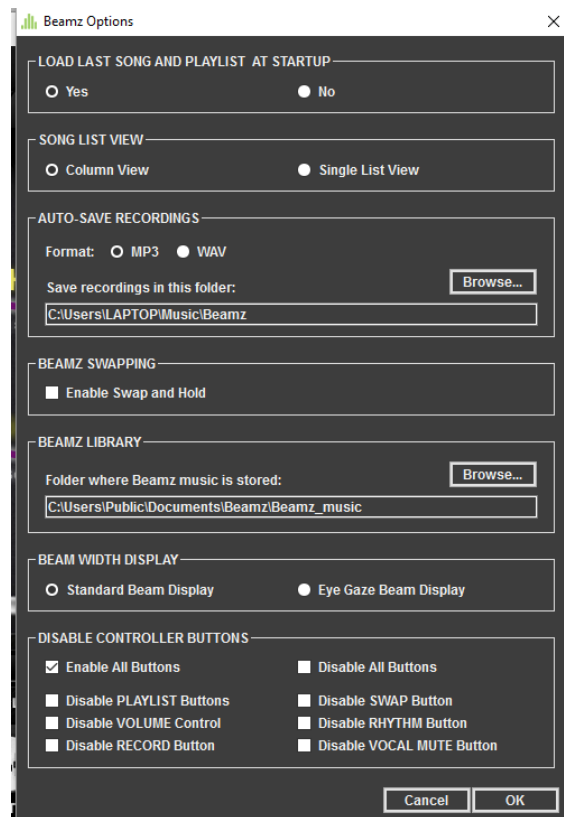


Within the settings area you can alter the beam width - eyes gaze beam display makes the beams thicker which is better when using the eyes gaze or camera mouse facility.





You can also alter where to routinely store recordings, enable/disable buttons, the song list view and where the Beamz library of music is stored.



6. To start recording a song click the 'Record' icon on PC or Record button on the actual device. To stop recording the record icon will have changed to stop so click stop. Your song will be automatically saved within the folder as stated in the settings page. To access your recordings click 'Recordings' icon on PC.

To download your recordings to external media eg usb stick or DVD then go to the area of the computer this recording is saved, right click the mouse, go to 'Send to' and choose the media you wish to save it on.

7. Record and customise some music

Choose a song from the playlist using the software to show your trainee. Go to the customise section and alter which instruments are on which page of instruments. Record a track and show its playback.

8. Basic operation – using IPAD/Smart phone

To use a smart phone ensure that your Bluetooth is on within your settings page. The Beamz device will need to be connected to a power source through a USB plug. The smart phone/IPAD will automatically connect to the Beamz. When using these devices there are minimal abilities to customise and change settings. Also please note that the software will run from that device and so you cannot use this simultaneously with PC as they will not synchronise.

9. Play some music

Connect the Beamz and use an IPAD or smart phone to connect to it. Choose songs from the playlist using the software to show your trainee.



10. Basic operation – connecting and using switches

To use a switch or multiple switches with the BEAMZ software you will need to first plug in the switch dongle provided into the USB port of the tablet or PC device. The switches will each need pairing with the device.

To pair the switch, press the button on the dongle and then P button on the bottom of the switch. Use the M button to select which instrument you wish to play. The number on the bottom of the switch will indicate which you are playing (see list on bottom of switch for the different modes).

NB as this needs a dongle to pair the switches then this cannot be utilised using the IPAD devices. Also if you are having problems pairing a switch please ensure they have enough power and do not need batteries replacing.

11. Play some music using Beamz and switches

Connect/pair the switches to the PC or tablet. Choose songs from the playlist using the Beamz software and show your trainee how to change the mode to alter which instrument the switch activates.

Show your trainees that you could have the Beamz device, switches and an eye gaze being used all at once creating a fun band for your users to enjoy together.